

What should I already know?

- The parts and functions of the human body.
- What animals need to survive.
- The different ways in which humans are healthy. Animals get nutrition from what they eat.
- Humans and some animals have skeletons and muscles for support, protection and movement.

What will I know at the end of the unit?

- I will create my own questions to research about the digestive system.
- I can identify the different organs that help my food digest.
- I can identify the different types of teeth in humans and their simple functions.
- I can identify why certain animals have certain teeth in order to help them to survive.
- I can identify why it's important to look after my teeth.

Scientific Language

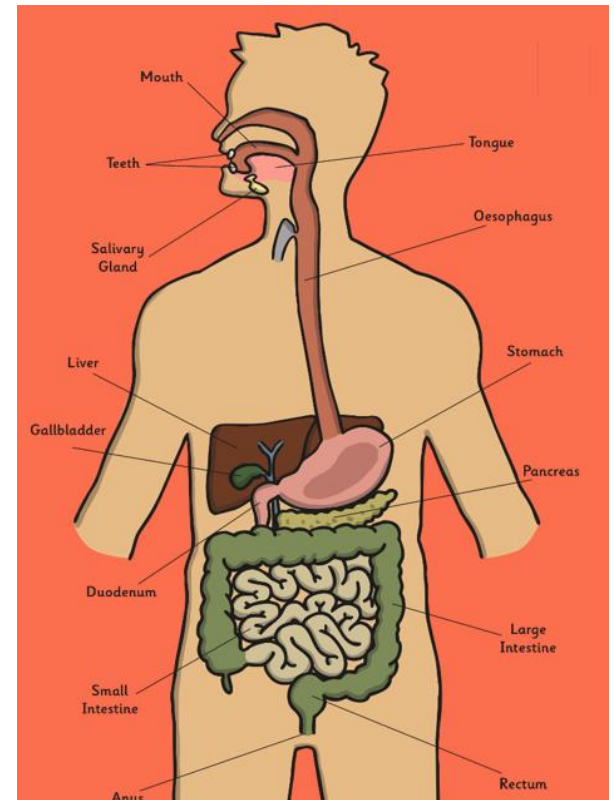
canine	pointed teeth near the front of the mouth
Decay	gradually destroyed by a natural process
Digestion	breaking down ingested food material
Enamel	the hard white substance that forms the outer part of a tooth
Excretion	the process of eliminating faeces, urine, or sweat from the body
incisor	the teeth at the front of your mouth which you use for biting into food
molar	the large, flat teeth towards the back of your mouth
plaque	a substance containing bacteria that forms the surface of your teeth
Saliva	the watery liquid that forms in your mouth
stomach	churns and makes gastric juice to help digest the food
Organ	group of tissues that has a specific function.

Diagram/ Key



Types and location of human

The human digestive system

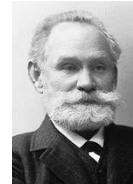


Research questions to investigate.

- What are the names for all the organs involved in the digestive system? (Identify and classify)
- How can we organise teeth into groups? (Classifying)
- How does an egg shell change when it is left in cola? (Observation over time)
- How do dentists fix broken teeth? (Research)

Scientist

Ivan Pavlov



Digestive System