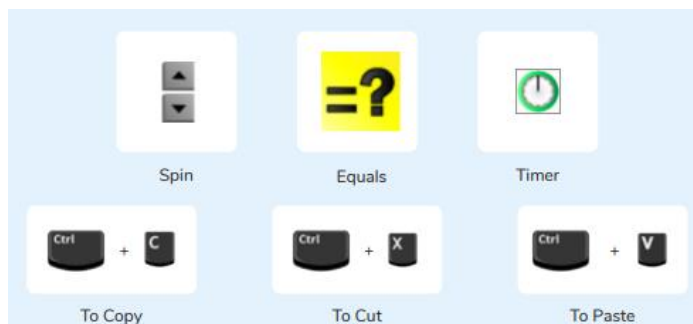
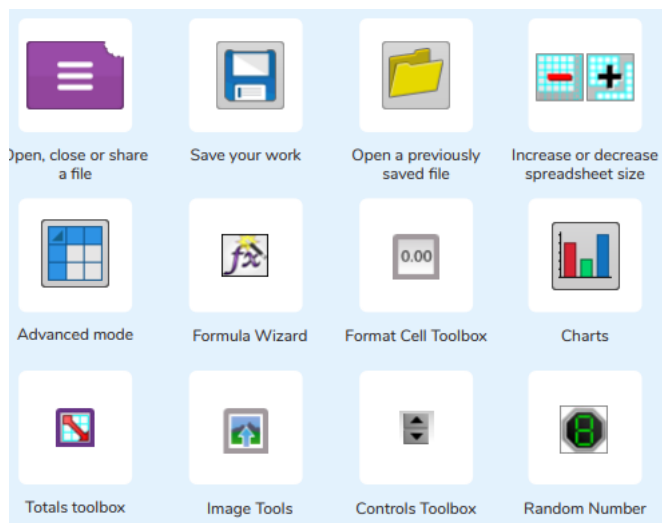
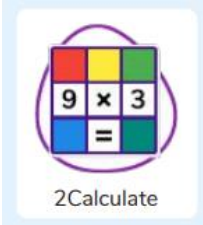


Enquiry Question: What would you use in 2Calculate to have a cell that automatically calculates the number of days since a certain date?



What should I already know?	What will I know at the end of the unit?
<ul style="list-style-type: none"> I can format cells as currency, percentage, decimal to different decimal places or fraction. I can use the formula wizard to calculate averages. I can combine tools to make spreadsheet activities such as timed times tables tests. I can use a spreadsheet to model a real-life situation. I can add a formula to a cell to automatically make a calculation in that cell. 	<ul style="list-style-type: none"> I can use formulae within a spreadsheet to convert measurements of length and distance. I can use the count tool to answer hypotheses about common letters in use. I can use a spreadsheet to model a real-life problem. I can use formulae to calculate area and perimeter of shapes. I can create formulae that use text variables. I can use a spreadsheet to help plan a school cake sale.

Key Vocabulary	
<p align="center">Rows Data Advance mode Formula Wizard Spreadsheet Format</p>	<p align="center">'How Many?' Tool Variable Columns Formula Formula Bar Totalling Tool</p>

Key Resources
<p align="center">  2Calculate </p>